



# INTEGRITI SALTO SHIP INTEGRATION

RELEASE NOTES V2.4  
FEBRUARY 2023



**INNER RANGE recommends that all Inner Range systems be installed & maintained by FACTORY CERTIFIED TECHNICIANS.**

**For a list of Accredited Dealers in your area refer to the Inner Range Website.**

**<http://www.innerrange.com>**

# Integriti SALTO SHIP Integration

## Table of Contents

<b>CURRENT RELEASE</b> .....	<b>4</b>
VERSION 2.4 – FEBRUARY 2023 .....	4
<i>Required Integriti Version License</i> .....	4
<i>Minimum Required Integriti Version</i> .....	4
<i>Tested Against</i> .....	4
<i>Bug Fixes</i> .....	4
<i>Known Issues</i> .....	4
<b>UPGRADING TO V2.X FROM V1.X</b> .....	<b>5</b>
<b>PAST RELEASES</b> .....	<b>6</b>
VERSION 2.3 – NOVEMBER 2022 .....	6
<i>Required Integriti Version License</i> .....	6
<i>Minimum Required Integriti Version</i> .....	6
<i>Tested Against</i> .....	6
<i>New Features</i> .....	6
<i>Bug Fixes</i> .....	7
VERSION 2.2 – DECEMBER 2021 .....	8
<i>Required Integriti Version</i> .....	8
<i>Tested Against</i> .....	8
<i>Bug Fixes</i> .....	8
<i>Feature Updates</i> .....	8
<i>Known Issues</i> .....	8
VERSION 2.1 – OCTOBER 2021 .....	9
<i>Required Integriti Version</i> .....	9
<i>Tested Against</i> .....	9
<i>Bug Fixes</i> .....	9
VERSION 2.0 – SEPTEMBER 2021 .....	10
<i>Required Integriti Version</i> .....	10
<i>New Features</i> .....	10
VERSION 1.6 – SEPTEMBER 2021 .....	11
<i>Required Integriti Version</i> .....	11
<i>Tested Against</i> .....	11
<i>Issues Resolved</i> .....	11
VERSION 1.5 – JUNE 2021 .....	12
<i>Required Integriti Version</i> .....	12
<i>Tested Against</i> .....	12
<i>Issues Resolved</i> .....	12
VERSION 1.4 – NOVEMBER 2019 .....	13
<i>Required Integriti Version</i> .....	13
<i>Tested Against</i> .....	13
<i>Feature Updates</i> .....	13
<i>Issues Resolved</i> .....	13
VERSION 1.3 – MARCH 2018 .....	14
<i>Required Integriti Version</i> .....	14
<i>Tested Against</i> .....	14

# INTEGRITI SALTO SHIP PLUGIN

<i>Feature Updates</i> .....	14
<i>Issues Resolved</i> .....	14
VERSION 1.2 – JANUARY 2018 .....	15
<i>Required Integriti Version</i> .....	15
<i>Tested Against</i> .....	15
<i>New Features</i> .....	15
<i>Feature Updates</i> .....	15
<i>Issues Resolved</i> .....	15
VERSION 1.1 – MAY 2017.....	16
<i>Required Integriti Version</i> .....	16
<i>Tested Against</i> .....	16
<i>Issues Resolved</i> .....	16
VERSION 1.0 – MAY 2017.....	17
<i>Required Integriti Version</i> .....	17
<i>Tested Against</i> .....	17
<i>Issues Resolved</i> .....	17

## Current Release

---

### Version 2.4 – February 2023

---

#### Required Integriti Version License

---

Integriti Pro/Infiniti v23 License

#### Minimum Required Integriti Version

---

Integriti Pro/Infiniti v22.1 or higher (v22.2 for Mobile/External Encoder Credentials)

#### Tested Against

---

- SALTO ProAccess SPACE v6.3.3

#### Bug Fixes

---

- **Integriti v23 Compatibility:** Fixed an issue with Integration's compatibility with v23 of Integriti.

#### Known Issues

---

- When using v22.2.0 and earlier of Integriti
  - Encoder Credentials will sometimes use the 'Generation Card Template' instead of the 'Salto Encoder Card Template'.
  - Doors assigned to Permission Groups by Door Lists are not updated when the Door List is updated. This can cause the Permission Group to be out of date until the Permission Group itself is synchronised.

## Upgrading To v2.x from v1.x

**Note:** It is highly recommended to make a backup of the SALTO Database before performing this update. The upgrade process involves an import of data from SALTO to generate new Doors and ensure other data is preserved correctly for use with v2.0 and above

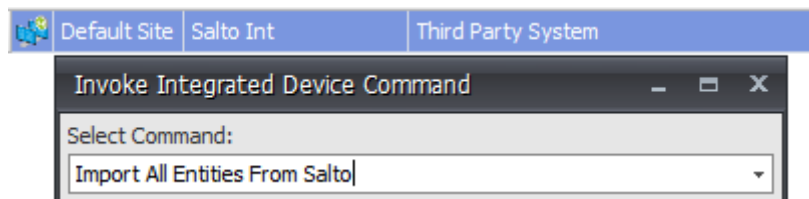
**Note:** The Integration will no longer synchronise entities by flagging a custom field, but based on whether they contain or have permission to a SALTO Door. More details can be found in the “Synchronising” section of this manual. Please keep this in mind when upgrading, as some entities might be deleted from SALTO if they do not adhere to the new synchronisation rules.

Upgrading to v2.0 or above requires some steps to be followed before the Integration is ready to use.

During this process, **do not modify any Users, Permission Groups or Door Lists** until “Import All Entities From Salto” has been successfully called. The other Integrated Device command “Resync Salto Entities” should also **not** be called until after a successful import has been performed.

When Upgrading to v2.0 or above from a previous version, follow the following steps:

- Start the Integration before upgrading and **ensure that there are no errors syncing.**
- Install the new version of the Integration as per the “Installation” section of the [Third Party Door Integrations Manual](#).
- Create a ‘Salto Controller’ by following the “Creating 3<sup>rd</sup> Party Controllers” section of the [Third Party Door Integrations Manual](#), set the Controller’s ‘Third Party System Device’ to a SALTO Integrated Device. Do this for each SALTO Integrated Device.
- Invoke the “Import All Entities From Salto” command on SALTO Integrated Devices as shown below (Refer to the “Invoking Commands” section of this document for instructions on how to invoke commands). This will upgrade existing Integrati Doors used to sync to SALTO into Third Party Doors, as well as updating other Entities and their custom fields.



Once the above command has been successfully called, the integration is ready to update/sync entities.

## Past Releases

---

### Version 2.3 – November 2022

---

#### Required Integriti Version License

---

Integriti Pro/Infiniti v22 License

#### Minimum Required Integriti Version

---

Integriti Pro/Infiniti v21.1 or higher (v22.2 for Mobile/External Encoder Credentials)

#### Tested Against

---

- SALTO ProAccess SPACE v6.3.3

#### New Features

---

- **Mobile Credentials:** Users can now be assigned Mobile Keys in Salto. The Integration will add a distinct User to hold the Mobile Key in Salto separate from any existing User that has a physical credential with the same permissions and properties.
- **External Encoder:** Salto Encoders can now be used to generate Credentials in Salto. They can also be used to Delete a Key from SPACE via Invoke Command on the Salto Integrated Device.
- **Entity Sync Update:** Now utilises Integriti's improved support for Entity Sync integrations, with updated error messages/system warnings and improved performance with multiple entity synchronisers running at once.

## Bug Fixes

---

- **Entity Names:** Fixed an issue where Integriti Entities would fail to sync if their Name field was longer than 32 characters.
- **Event Manager:** Fixed an issue where a User's updated Name was not reflected in generated Review unless the Integration was restarted.
- **Door Commands:** Fixed an issue where commands could be called on Doors multiple times when called via a Door List.

## Version 2.2 – December 2021

---

### Required Integriti Version

---

Integriti Pro/Infiniti v21.1 or higher

### Tested Against

---

- SALTO ProAccess SPACE v6.3.3

### Bug Fixes

---

- **User Sync:** Fixed an issue where it was possible for User changes made during Integration start up could incorrectly remove a User from SALTO.
- **Event Manager:** Fixed an issue that could cause the Event Manager to get stuck processing an Event that throws an exception. Additionally, fixed an issue where unnecessary requests to SALTO were made when an Event had an unknown Subject (User or SALTO Software Operator).
- **Exception Logging:** Exceptions thrown because of the Integration shutting down have been set to generate 'Message' logs instead of 'Warning'.

### Feature Updates

---

- **User Sync:** Added 'Salto Can Initiate Office Mode' custom field, allowing Users in Integriti to be given permission to initiate Office Mode on valid Doors.

### Known Issues

---

- **Doors Referenced in Review:** A rare issue has been observed where events generated by some Doors generate Review that references a different Door. It is recommended to check the SALTO Hardware configuration, but has also been observed to be fixed after an Integration Server restart.



## Version 2.1 – October 2021

---

### Required Integriti Version

---

Integriti Pro/Infiniti v21.1 or higher

### Tested Against

---

- SALTO ProAccess SPACE v6.3.3

### Bug Fixes

---

- **Synchronising SAM Keys:** Fixed an issue where an exception was thrown sending SAM Key Data to the connected SALTO system.
- **Importing Doors:** Fixed an issue Importing Doors with Automatic Changes Tables assigned to them.

## Version 2.0 – September 2021

---

### Required Integriti Version

---

Integriti Pro/Infiniti v21.1 or higher

### New Features

---

- **Third Party Doors and Controllers:** The Integration now uses Integriti's Third Party Doors and Controllers to manage SALTO Doors. Third Party Doors will be automatically synchronised to SALTO when created under an associated Controller. Please refer to SALTO and Integriti Third Party Door manuals for more information.
- **Import Commands:** The Integration is now capable of importing SALTO entities into Integriti using Invoked Commands on the Integrated Device. It can import Doors, Users, or all SALTO Entities.
- **Prioritise Card Templates for Card Sync:** The Integration now supports ranking Card Templates to prioritise certain Cards over others when a User has multiple Cards.

## Version 1.6 – September 2021

---

### Required Integriti Version

---

Integriti Pro/Infiniti v20.1 or higher

### Tested Against

---

- Salto ProAccess SPACE v6.3.3

### Issues Resolved

---

- **Integriti v21.1 Compatibility:** Fixes an issue where v1.5 and earlier was not compatible with Integriti v21.1.

## Version 1.5 – June 2021

---

### Required Integriti Version

---

Integriti Pro/Infiniti v17.0 or higher

### Tested Against

---

- Salto ProAccess SPACE v6.3.3

### Issues Resolved

---

- **Entity Syncing:** Fixed an issue where Users with an empty PIN Code may not be synchronised.
- **Version Testing:** Now formally tested against Salto SPACE v6.3.3

## Version 1.4 – November 2019

---

### Required Integriti Version

---

Integriti Pro/Infiniti v17.0 or higher

### Tested Against

---

- Salto ProAccess SPACE v2.6.3
- Salto ProAccess SPACE v4.1.2.2

### Feature Updates

---

- **Configuration Settings:** General improvements to UI.

### Issues Resolved

---

- **Entity Syncing:** Fixed an issue where it was possible to miss entity updates if the number of entities updated at one time exceeded a certain size.
- **Review:** Fixed an issue where audit requests made by the Integration that resulted in exceptions caused issues.

## Version 1.3 – March 2018

---

### Required Integriti Version

---

Integriti Pro/Infiniti v17.0 or higher

### Tested Against

---

- Salto ProAccess SPACE v2.6.3
- Salto ProAccess SPACE v4.1.2.2

### Feature Updates

---

- **Version Update:** Updated to support v18 of the Integriti Software.

### Issues Resolved

---

- **Review:** The version update has resolved a potential issue where some Review generated by the Event Manager caused issues.
- **Card Syncing:** The Integration will no longer use Cards with no Card Template for syncing.

## Version 1.2 – January 2018

---

### Required Integriti Version

---

Integriti Pro/Infiniti v17.0 or higher

### Tested Against

---

- Salto XS4 SPACE v2.6.3

### New Features

---

- **User Custom Fields:** Added “Use Extended Opening Time” and “Use Antipassback” Custom Field options for Users.
- **Door Custom Fields:** Added “Enable Antipassback” and “Antipassback Direction” Custom Field options for Doors.

### Feature Updates

---

- **Entity Validation:** Validation of Custom Field values has been made more robust

### Issues Resolved

---

- **User Permissions:** Permissions with expired User Qualifications should no longer be synchronised to Salto.
- **Connection:** Integrations will now attempt to reconnect when encountering issues starting up.

## Version 1.1 – May 2017

---

### Required Integriti Version

---

Integriti Pro/Infiniti v17.0 or higher

### Tested Against

---

- Salto ProAccess SPACE v2.6.3

### Issues Resolved

---

- **User Validation:** Fixed an issue where User PINs were not validated correctly.
- **Device Attributes:** Fixed an issue where Salto System Names were not being saved correctly.



## Version 1.0 – May 2017

---

### Required Integriti Version

---

Integriti Pro/Infiniti v17.0 or higher

### Tested Against

---

- Salto ProAccess SPACE v2.6.3

### Issues Resolved

---

- **Initial Release**