

T4000 SECURITY COMMUNICATOR

The Superior Choice in
Wireless IP Alarm Communicators



SkyCommand Panel Configuration

SkyCommand utilises the T4000s high level serial connection to Inner Range panels to provide area and output control as well as alarm reporting. The panel must have a user configured for the T4000 to authenticate with and a comms task for communication. SkyCommand can control Areas on all panels, User Controllable Outputs on Inception, Named Actions on Integriti and Home Auxiliaries on Concept.

SkyCommand User PIN

Each SkyCommand user on a site requires a PIN to authenticate control with a panel. The permissions for the PINs corresponding panel user determine which areas and actions can be controlled from SkyCommand.

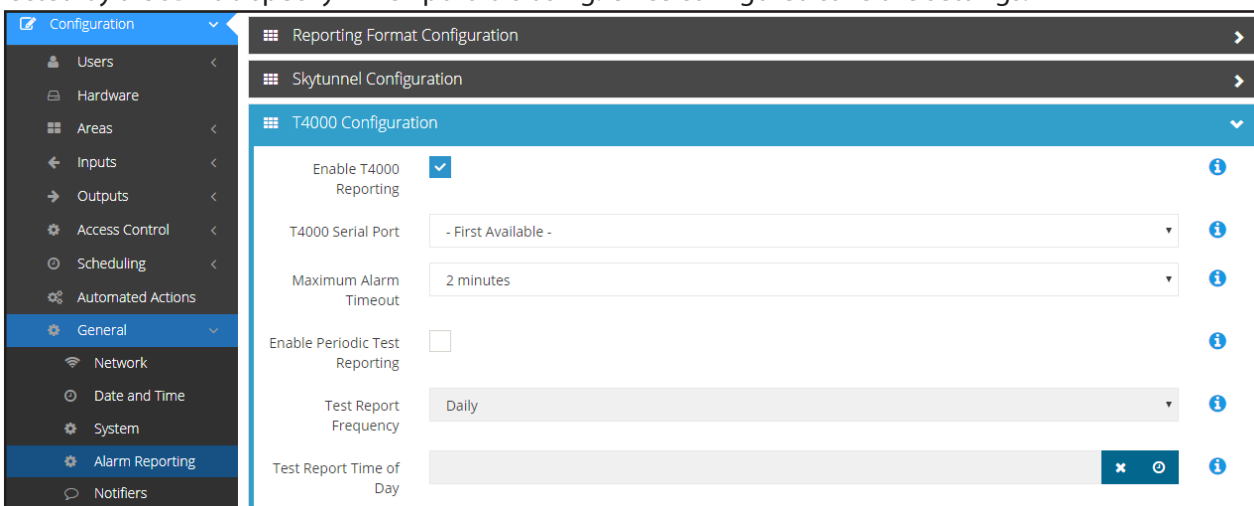
Note: On Concept panels only PINs for the first 32 users will work for remote control. The User and User Type must have permissions to control the required Areas and Home Auxiliaries.

Note: On Integriti panels the user that authenticates SkyCommand must have permissions to control the required Areas and Named Actions. The users Menu Group must have Remote Access Permissions for Area Arm / Disarm and any entity type that is controlled by the Named Action.

Inception Controller Configuration

Login to the Inception Web Interface as the Installer. Ensure the Inception firmware version is 1.3.6 or later.

Go to [Configuration > General > Alarm Reporting] and tick Enable T4000 Reporting. If the T4000 is connected by a USB hub specify which port it is using. Once configured save the settings.



Integriti Controller Configuration

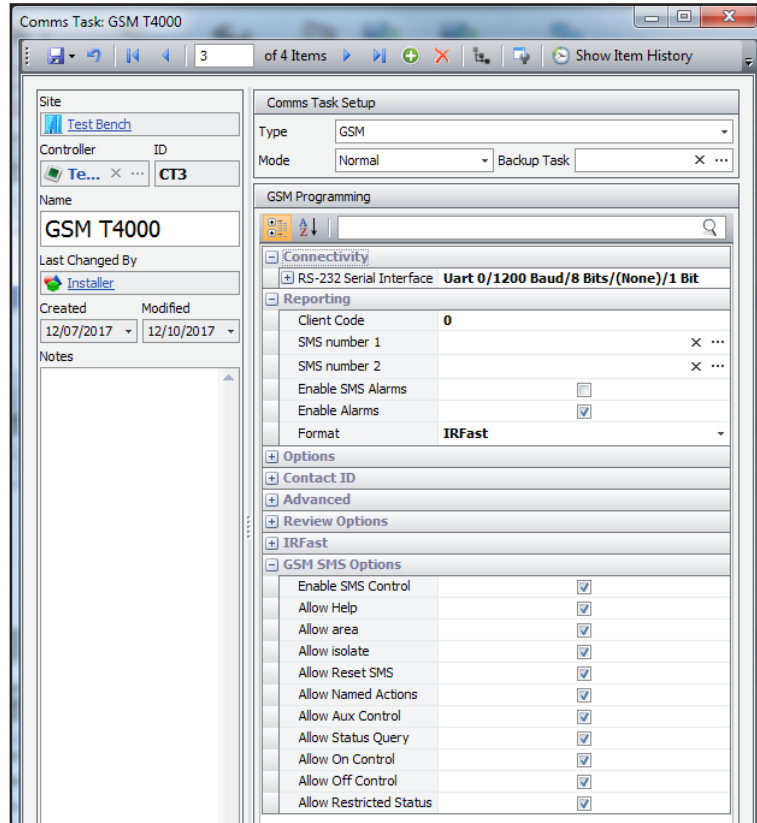
Login to the Integriti System Designer as the Installer and go to [Systems > Comms Tasks]. Configure a GSM comms task for T4000 reporting and remote control.

Under Connectivity set the Serial Channel as the one the T4000 is connected to, Baud rate as 1200 Baud, Data Bits as 8, Parity as None and Stop Bits as 1.

Under Reporting tick Enable Alarms and set the desired reporting format.

Under GSM SMS Options tick all available options. These must be allowed for SkyCommand control to work.

Once all settings are configured save and restart the comms task.



Concept Controller Configuration

Log in as the Installer via a keypad and access the comms task programming [MENU - 7 -3 -1]. Configure a GSM comms task for the T4000 reporting and remote control.

```
CT003 Idle ->
GSM
```

Access the GSM comms task programming, press [9] to Idle the comms task then [Help - 9] to access programming. Set the Port as the one the T4000 is connected to and set the Baud rate as 1200.

Access the SMS Options programming, press [Help - 9] whilst on the Port settings then [OK]. Set Area Control, Home Aux Control, Status Requests and Isolations to Yes.

```
CT003 AXLI...N
SOpts-> YYYynnnn
```

Exit the comms task programming [Help - 0],[Help -0] and activate the comms task [9].



www.innerrange.com

inner range

Intelligent Security Solutions

Inner Range Pty Ltd

1 Millennium Court Knoxfield, Victoria, 3180, Australia

Tel: +61 3 9780 4300

Fax: +61 3 9753 3499

email: admin@innerrange.com

innerrange.com