



INTEGRITI EXACQ CCTV PLUGIN

*Document created with reference to Integrati Professional software version
v18.0.1.12498*



**INNER RANGE recommends that all Inner Range systems
be installed & maintained by FACTORY CERTIFIED
TECHNICIANS.**

**For a list of Accredited Dealers in your area refer to the
Inner Range Website.**

<http://www.innerrange.com>

Integrati Exacq CCTV Plugin

Table of Contents

CCTV CAPABILITIES.....	3
INTEGRITI EXACQ CCTV PLUGIN COMPATIBILITY	4
REQUIRED INTEGRITI VERSION LICENSE	4
MINIMUM INSTALLED INTEGRITI VERSION.....	4
LICENSING REQUIREMENTS	4
TESTED AGAINST.....	4
INSTALLATION/UPDATING	5
ENROLMENT	5
EVENTS	8
RECEIVING EVENTS.....	8
INVOKING COMMANDS	9
INVOKING COMMANDS ON EXACQ RECORDERS.....	9
INVOKING COMMANDS ON EXACQ CAMERAS	9
VIEWING VIDEO FROM CCTV CAMERA	11
VIEWING LIVE VIDEO ON A CONNECTED CCTV CAMERA.....	11
ASSOCIATING ENTITIES WITH A CCTV CAMERA	11
VIEWING ARCHIVED VIDEO FROM A REVIEW EVENT	11
CONFIGURATION	13
REVIEW PLAYBACK BUFFER	13
DISABLING CCTV CAMERAS.....	13
ADDING CCTV CAMERAS TO SCHEMATICS	14
TROUBLESHOOTING	16

CCTV Capabilities

Capabilities	Exacq
Stream Live Video	✓
Stream Historical Video	✓
Pop-Up Live Streaming Video from Alarm/User Events in Real-Time	✓
Associate Cameras with Entities (Doors, Users etc)	✓
Access Recorded Video Information Based on Review Events	✓
Retrieve Number of Connected Cameras	✓
Retrieve Camera Names	✓
Control Physical PTZ Cameras	✓
Control Digital Software PTZ Cameras	✓
Send PTZ Cameras to Pre-Set Positions	✓
Drag and Drop Cameras Onto Floor Plans	✓
Send Alarms or Events to the CCTV System	✓
Receive Alarms or Events from the CCTV System	✓
Sync CCTV System Time (Direct or via NTP)	✓
Display Video Frame Times	✓
Control Playback Speed / Direction	✓
Enable On-Screen Display Information	✗
Display Historic Video According to Adjustable Pre-Event Timer	✓
Stream Audio with Video	✗
Send Audio from Client Workstation to CCTV System	✗
Display CCTV System and Device Status	✓
License Plate Recognition - Requires Integriti v18 or higher	✗
Categorised Review Messages - Requires Integriti v18 or higher	✓

NOTE: Support for any feature listed above may be model or version specific – further consultation with Inner Range and the CCTV manufacturer is highly recommended.

Integrati Exacq CCTV Plugin Compatibility

Required Integrati Version License

Integrati Pro/Infiniti v18 license

Minimum Installed Integrati Version

Integrati Pro/Infiniti v18.0 or higher

Licensing Requirements

Integrati CCTV integrations require 1 CCTV camera license per Camera to be used in the system. Any Cameras that are unlicensed will still show up in Integrati, however will not be able to be used.

Tested Against

The Integrati Exacq CCTV plugin was built and tested against the following versions of software:


- ExacqVision v9.2.3.130093

Installation/Updating

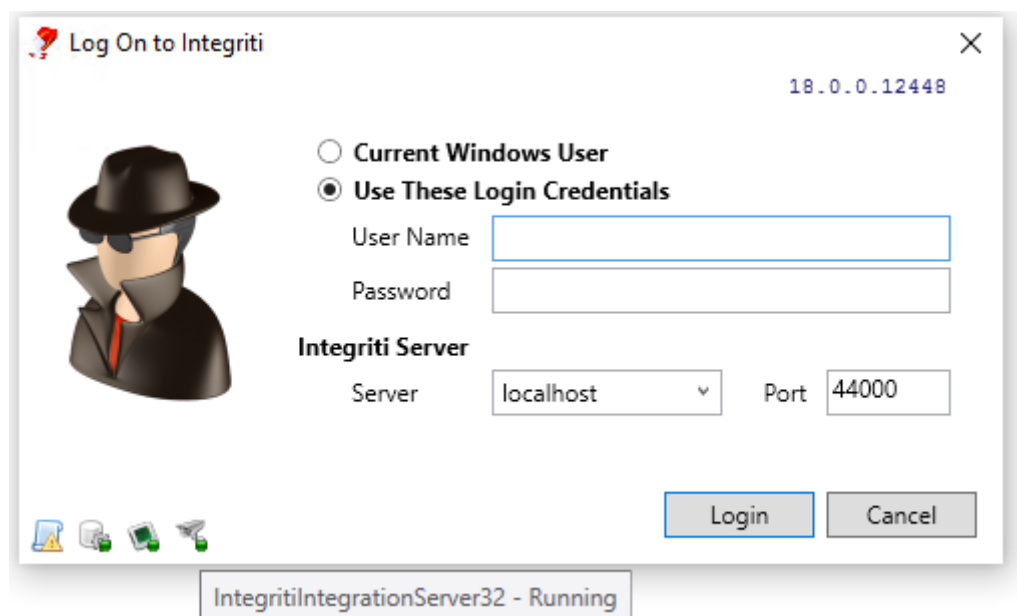
NOTE: When installing multiple Integriti Integration Plugins, the plugin with the highest build number should be installed last. The build number can be found in brackets in the file name of the installer for the plugin.

Close all instances of the Integriti software suite and stop the Integriti Integration Server service.

Download and run the plugin installer on the server and client workstations.

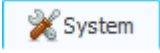

 Integriti_CCTV_Exacq_Plugin_X.X_(XXXXXX).exe

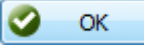
After the installation has completed, you will need to restart the Integration Server service. On the Integriti server, start the Integriti System Designer as an administrator. Click Integration service icon on the bottom left of the login dialog to stop and start the service.

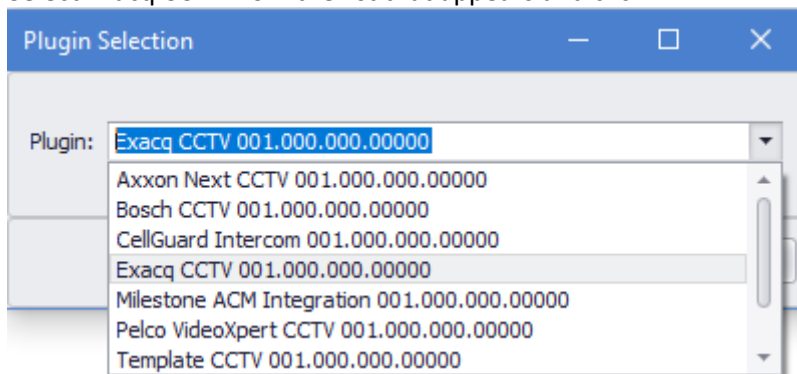


Enrolment

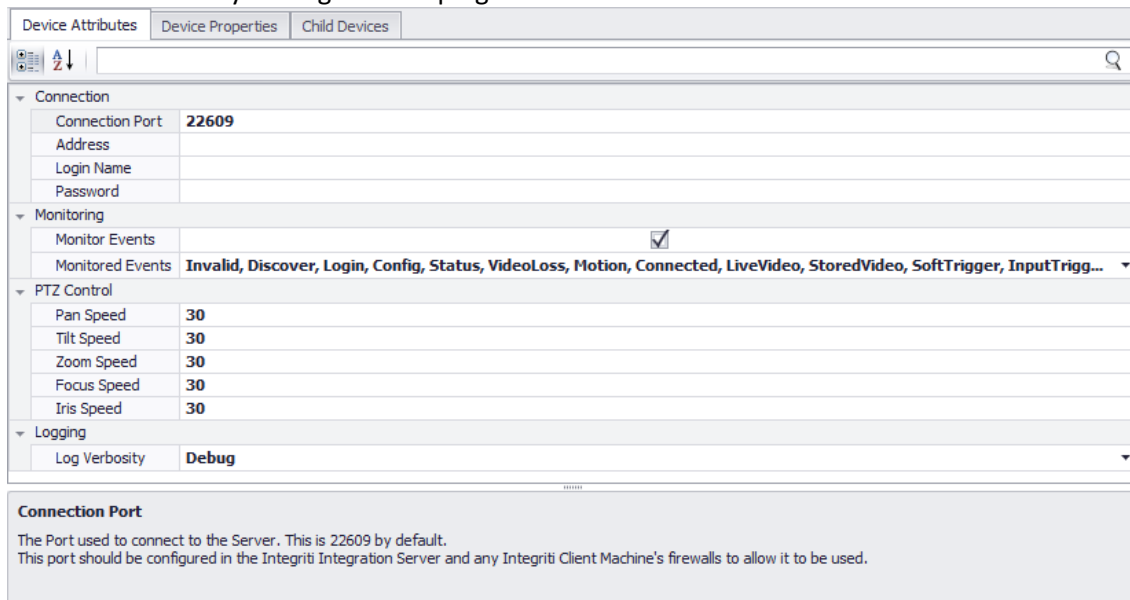
To enrol a Exacq CCTV Server

1. Click on the  System tab followed by  New Integrated Device.

2. Select Exacq CCTV from the list that appears and click 



3. In the editor window that appears, give the new CCTV Recorder a name.
4. Tick **Maintain Persisted Connection** above the **Device Attributes** tab if events are to be received the Exacq server.
5. Select the Integriti Integration server that will be used for the integration.
6. Enter the necessary settings for the plugin.



Device Attributes

Connection

- *Address* – The IP Address of the Server to connect to.
- *Login Name* – The Username of the Exacq User to connect to the Server with. This User should have sufficient permissions configured in Exacq to allow all of the features of the plugin to be used.
- *Password* - The Password of the Exacq User to connect to the Server with.
- *Port* - The Port used to connect to the Server. This is 22609 by default. This port should be configured in the Integriti Integration Server and any Integriti Client Machine's firewalls to allow it to be used.

Monitoring

- *Monitor Events* – Set to true to enable monitoring the state of Cameras on the connected Server. Camera State will only be received when 'Maintain Persisted Connection' is selected.
- *Monitored Events* - Allows the types of events received from the ExacqVision System to be filtered based on event type. Select the event types to be monitored from the dropdown list.

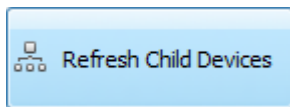
PTZ Control

- *Pan Speed* – Select the speed of Pan PTZ Operations
- *Tilt Speed* – Select the speed of Tilt PTZ Operations
- *Zoom Speed* – Select the speed of Zoom PTZ Operations
- *Focus Speed* – Select the speed of Focus PTZ Operations
- *Iris Speed* – Select the speed of Iris PTZ Operations


Logging






- *Log Verbosity* - Only logs of the specified level or higher will be logged. If Warning is selected, only Warning, Error and Fatal logs will be written to the log.

Child Devices



7. Click on .

After a short wait, a list of all of the cameras configured in the selected CCTV Server will be added to the  tab.

Db Object	Notes
	
>  AUTODOME IP 4000 HD (192.168.10	
 DS-2DF5284-A(20851)	
 KCM5311-11F-X-00052(63747:2)	
 KCM5311-11F-X-00052(63747:1)	

- 8. You can optionally add notes next the child devices.
- 9. Save and close the editor window for the new integrated CCTV device.

Events

Receiving Events

In the Integriti System Designer software:

1. Create and configure a Exacq CCTV Recorder as described in [Enrolment](#).
2. Ensure that 'Monitor Events' is set to true and **Maintain Persisted Connection** is ticked.
3. Select the types of events to be received in 'Monitored Events'.
4. Upon saving the Exacq CCTV Recorder, Review Messages will be automatically generated for any event that occurs in the Exacq Server of any event types selected in 'Monitored Events'.

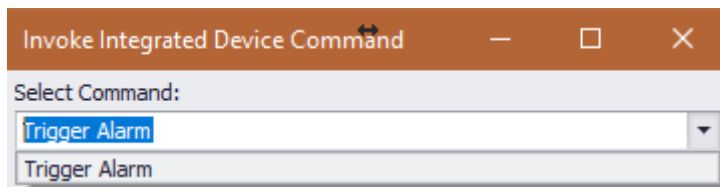
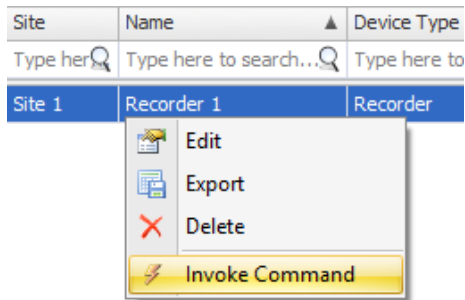
CCTV events will appear as an 'Integration' type with the source being the Integriti integration server and the text prepended by '[Exacq]'.

e.g. "CCTVServer32: IntegritiIntegrationServer32@YOURINTEGRITISERVER"

Invoking Commands

Invoking Commands on Exacq Recorders

To perform a command on the Exacq System through the Integrati software select 'Invoke Command' from the context menu of the CCTV Recorder for the selected server.

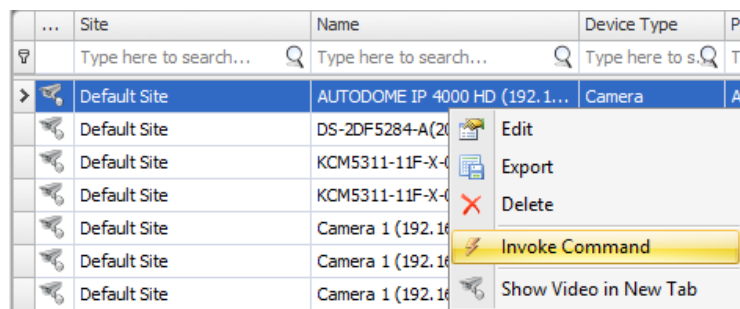


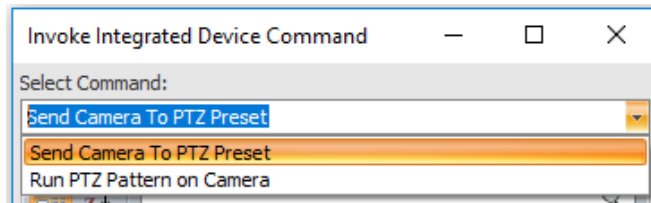
From the Invoke Integrated Device Command window that appears, select the required command from the dropdown box:

Trigger Alarm	Triggers the alarm with the given name in the ExacqVision system
----------------------	--

Invoking Commands on Exacq Cameras

To perform a command on a camera in the Exacq System through the Integrati software select 'Invoke Command' from the context menu on a CCTV Camera for the selected server.





From the Device Command window that appears, select the required command from the dropdown box:

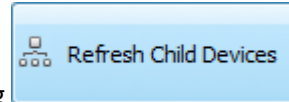
**Send Camera To
PTZ Preset**

Send the selected Camera to the PTZ Preset with the Id specified by 'Ptz Id'.

Viewing Video from CCTV Camera

Viewing Live Video on a Connected CCTV Camera

1. Create and configure the Exacq CCTV Recorder as described in [Enrolment](#).



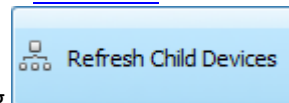
2. Retrieve child Cameras from the selected server by selecting in the CCTV Recorder. The Camera to view video from must be configured correctly for streaming video on the Exacq server.
3. Select 'Show Video in New Tab' from the context menu on the CCTV camera to view video from.

...	Site	Name	Device Type
	Type here to search...	Type here to search...	Type here to s...
>	Default Site	AUTODOME IP 4000 HD (192.1...	Camera
	Default Site	DS-	Edit
	Default Site	KCM	Export
	Default Site	KCM	Delete
	Default Site	Can	Invoke Command
	Default Site	Can	Show Video in New Tab
	Default Site	Can	

4. The live video stream for the selected camera will then be shown in a new tab.

Associating Entities With a CCTV Camera

1. Create and configure the Exacq CCTV Recorder as described in [Enrolment](#).




2. Retrieve child Cameras from the selected server by selecting in the CCTV Recorder. The Camera to view video from must be configured correctly on the Exacq server.
3. Close the editor for the CCTV Recorder and open the editor for the CCTV Camera to associate with Integrati Entities.
4. Under **Associated Entities**, click on the **Add** button.
5. From the window that appears, select the Entities to associate with the CCTV Camera.
6. Save and close the window.

Viewing Archived Video From a Review Event

If any of a Review Message's Entities have associated cameras, it is possible to view archived video from the time of the Review Message by right clicking the selected Review message and selecting .

It is also possible to view CCTV footage for Review Messages from the CCTV Plugin, if the event comes from a Camera in the CCTV System, by following the steps above.

18/03/2013 1:51:53 PM	Door 1 Lock Off by R&D (Door Logic) (R01:X01)	Details...
18/03/2013 1:51:53 PM	R&D Locked by (Door Logic) (D001)	Show CCTV Footage
18/03/2013 1:51:48 PM	Door 1 Lock On by R&D (Door Logic) (R01:X01)	Edit RD (D1)...
18/03/2013 1:51:48 PM	R&D Timed Unlocked for 00005 secs by R&D Readers	Edit Darryl Hammitt (U3)...
18/03/2013 1:51:48 PM	Darryl Hammitt Card Access at R01:Rdr01 into R&D	

Upon selecting  on a valid Review Message, the archived video stream of all Cameras associated with any of the Entities in the Review Message will start playing in a new tab at the time that the Review Message occurred minus the [Review Playback Buffer](#) for the selected Camera.

Configuration

Review Playback Buffer

The Review Playback Buffer allows the amount of time prior to an event occurring to start playing archived video footage for a camera when viewing CCTV footage for a Review Message. This allows the lead-up to the event to be shown, as well as the event itself. The Review Playback Buffer can be set in the following places, with each having different scopes:

- CCTV Camera – From the editor for a CCTV Camera (accessed by double clicking on the desired camera) it is possible to set the Review Playback Buffer on a per camera basis.



Check Override Site Default Setting to use the value entered instead of the default value for the Site.

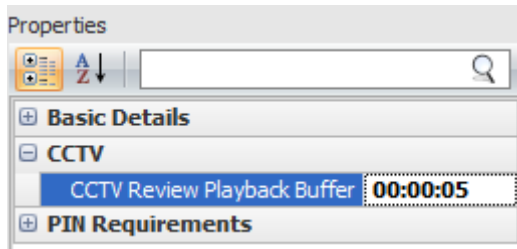
- CCTV Recorder – From the editor for a CCTV Recorder (accessed by double clicking on the desired recorder) it is possible to set the Review Playback Buffer for all child cameras of the selected Recorder.



Check Override Site Default Setting to use the value entered instead of the default value for the Site.

The selected Review Playback Buffer will be used for all child Cameras of the selected Recorder that do not have Override Site Default Setting checked.

- Site Properties – From the editor for the Site Properties of a Site (accessed by double clicking on the desired Site) it is possible to set the Review Playback Buffer for all Cameras in the selected Site.





The selected Review Playback Buffer will be used for all Cameras in the selected Site that do not have a Override Site Default Setting checked in its parent Recorder or in the Camera itself.

A Review Playback Buffer set from Site Properties will apply to any sub-sites of the selected Site, unless said Site has a Review Playback Buffer explicitly set.

To set the same Review Playback Buffer for all Cameras in an Integriti system with Override Site Default Setting unchecked, the Review Playback Buffer of the top-level site can be set.

Disabling CCTV Cameras

Once a CCTV Recorder has been enrolled, and Child Cameras retrieved from the server, not all of the Cameras may be required. As enabled Cameras take up Camera licenses it is possible to disable cameras through the following steps:

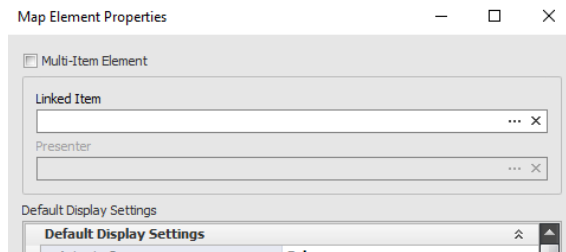
1. Click on the  System tab followed by  CCTV Cameras .

2. Double click the CCTV Camera to be disabled. The editor window for the CCTV Camera should appear.
3. Click on Disable Device to check the checkbox and disable the selected CCTV Camera.
4. Save and close the editor window and the CCTV Camera will be disabled.

NOTE: Disabled CCTV Cameras cannot be used, and must be re-enabled (by unchecking Disable Device in the CCTV Camera) before they can be used again.

Adding CCTV Cameras to Schematics

1. In Integriti System Designer double click on the Schematic Map to add the desired CCTV Camera/s to. The editor window for the Schematic should appear.
2. Select Icon from the bar at the top of the screen and click on the map at the desired location of the CCTV Camera to add a new icon to the Schematic at the selected location. The Map Element Properties window should appear.



3. Select in the property to select the Camera to add to the Schematic. The Find Entity window should appear.
4. From the left hand side of the Find Entity window select Cameras to filter the list down to show only Cameras.

Find Entity

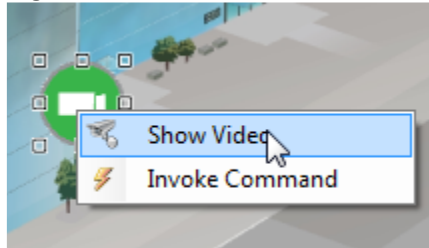
List Filters	...	Site	Name	Device Type
<input checked="" type="radio"/> Cameras	<input type="text"/>	Type here	Type here to sear.	Type here
<input type="radio"/> Intercom Points	<input type="checkbox"/>	Default Site	Camera 1 (192.16...	Camera
<input type="radio"/> Integrated Devices	<input type="checkbox"/>	Default Site	Camera 1 (192.16...	Camera
	<input type="checkbox"/>	Default Site	AUTODOME IP 40...	Camera

5. From the list of CCTV cameras available in the system, select the Camera to add to the Schematic and select OK to close the Find Entity window.
6. Select OK again in the Map Element Properties window to finish adding the selected Camera to the map.
7. Move and resize the newly added icon () for the selected CCTV Camera to the desired location and size.
8. Save and close the editor for the Schematic.

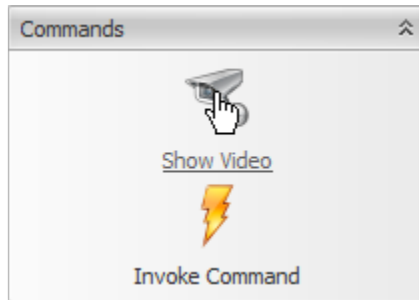
Upon being added to a Schematic, the icon for the CCTV camera will allow for the following in the Schematics Map:

- If [CCTV Device State monitoring](#) is enabled, the live state of the camera will be shown on the map through different coloured icons, as well as a text description when the icon is clicked on.
- Live video for the CCTV camera can be shown through one of the following two approaches:

- Right click on the icon for the Camera and select Show Video.



- Click on the icon for the Camera then click on Show Video in the Commands toolbox.



- Invoking one of the available commands for the selected Camera.

Troubleshooting

Plugin doesn't appear in 'New Integrated Device' List

Restart the Integriti Integration Server and restart any instances of Integriti System Designer or Integriti Gatekeeper open on the computer experiencing the problem

Live video not streaming from camera

- Is the camera is correctly configured in the Exacq server?
- Can live video be viewed from the Exacq software?
- Does the logged in Exacq User have sufficient permissions for viewing live video?

Archived video not streaming from camera

- Is the camera is correctly configured in the Exacq server?
- Can archived footage be viewed on the Exacq server for the selected time (and does archived footage exist at the selected time)?
- Does the logged in Exacq User have sufficient permissions for viewing archived video?

Archived video going to the wrong time

- Does archived footage exist at the selected time?
 - Is the time the same on both the Exacq server and the client computer viewing archived video from?
-