



INTEGRITI NX WITNESS CCTV INTEGRATION

*DOCUMENT CREATED WITH REFERENCE TO INTEGRITI PROFESSIONAL SOFTWARE
VERSION V23.1.0.21141*



**INNER RANGE recommends that all Inner Range systems
be installed & maintained by FACTORY CERTIFIED
TECHNICIANS.**

**For a list of Accredited Dealers in your area refer to the
Inner Range Website.**

<http://www.innerrange.com>

Integrati Nx Witness CCTV Integration

Table of Contents

CCTV CAPABILITIES.....	3
CORE CCTV CAPABILITIES	3
ADVANCED CCTV CAPABILITIES	5
INTEGRITI NX WITNESS CCTV INTEGRATION COMPATIBILITY	7
IMPORTANT NOTES	7
REQUIRED INTEGRITI VERSION LICENSE	7
MINIMUM INSTALLED INTEGRITI VERSION.....	7
LICENSING REQUIREMENTS	7
TESTED AGAINST.....	7
NX META SERVER CONFIGURATION	8
INTEGRITI CONFIGURATION	9
PORTS USED	9
CONNECTION	9
LOGGING.....	9
MONITORING.....	9
EXPORT.....	10
PTZ CONTROL.....	10
COMMANDS	11
CCTV RECORDER COMMANDS	11
CCTV CAMERA COMMANDS.....	13
TROUBLESHOOTING	14

CCTV Capabilities

Core CCTV Capabilities

Feature	Feature Description	Ver	Y/N
<i>Stream Live CCTV Footage</i>	Live CCTV footage can be streamed from online cameras in the CCTV system to an Integriti client.	18	✓
<i>Select Custom Aspect Ratio</i>	Select the aspect ratio to use when streaming CCTV footage on a per-camera or per-recorder basis.	18	✓
<i>Stream Archived CCTV Footage</i>	Archived CCTV footage can be streamed from online cameras in the CCTV system to an Integriti client.	18	✓
<i>Control Archived CCTV Playback Speed</i>	Playback speed of archived CCTV footage can be controlled from the Integriti client.	18	✓
<i>Auto-Play CCTV Footage from Events</i>	Live or archived CCTV footage can be configured to be automatically displayed when an event occurs in the Integriti System on a specific client workstation.	18	✓
<i>Retrieve Details of Configured Cameras</i>	Details of all configured cameras (such as Camera Name) can be retrieved from the CCTV System when Refreshing Child Devices.	18	✓
<i>Associate Cameras With Entities</i>	Cameras loaded from the CCTV system can be associated with Integriti Entities to allow direct control of one from the other.	18	✓
<i>Show Associated CCTV From Event</i>	Associated CCTV Footage can be directly accessed and viewed from any event occurring in Integriti that has an associated Camera (either a direct association or through the Entity that triggered the event)	18	✓
<i>Control PTZ Cameras</i>	Send PTZ commands to support cameras on the CCTV system to control the Pan, Tilt and Zoom of the camera directly from the video stream.	18	✓
<i>Send Cameras to PTZ Preset</i>	Send supported PTZ cameras on the CCTV system to preconfigured PTZ presets directly from the video stream.	18	✓
<i>Digital PTZ Control</i>	Digitally zoom the CCTV stream's image for non-PTZ cameras and archived footage.	18	✓
<i>Trigger Actions in the CCTV System</i>	Trigger actions or commands in the CCTV system directly from Integriti.	18	✓

INTEGRITI NX WITNESS CCTV PLUGIN

<i>View and Control Cameras on Schematics</i>	Cameras can be added to Schematics Maps in Integriti and directly viewed and controlled directly from the Schematic. Each camera's state is immediately visible on the Schematic where available.	18	✓
<i>Sync Time (via NTP)</i>	Sync the time of the CCTV system and Integriti to match via an NTP.	18	✓
<i>Display Connection Status to CCTV System</i>	Display whether or not Integriti is currently connected to the CCTV system.	18	✓
<i>Receive Events/Alarms from the CCTV System</i>	Log events/alarms occurring on the CCTV system to Integriti's Review.	18	✓
<i>Trigger Integriti Actions on CCTV Events/Alarms</i>	Trigger actions to automatically occur in Integriti whenever specific events/alarms are received from the CCTV system.	18	✓
<i>Generate Alerts from CCTV Events/Alarms</i>	Automatically generate and restore Alerts tied to a specific Camera in Integriti whenever specific events/alarms are received from the CCTV system.	19	✓

Advanced CCTV Capabilities

Feature	Feature Description	Ver	Y/N
<i>Automatically Load Camera Configuration</i>	Refreshing Child Devices will automatically populate all cameras configured in the CCTV System into Integriti when run. If not supported, camera configuration will need to be manually entered into Integriti.	22	✓
<i>64-bit Integration Server Support</i>	The integration supports being run on the 64-bit integration server.	22	✓
<i>Show Camera Status</i>	The current online/offline status of configured cameras will be visible directly through Integriti.	22	✓
<i>Categorised Review Records</i>	Review generated by the integration will have a different category for different event types, allowing for easy filtering of specific CCTV events	22	✓
<i>License Plate Recognition</i>	License plates recognised by supported cameras in the CCTV system can be used to automatically allow access to configured Doors.	22	✓
<i>Trigger Inputs on CCTV Event</i>	Inputs in Integriti can be automatically triggered and restored when specified types of events are received from the CCTV system.	22	✓
<i>Control Iris and Focus</i>	Control the iris and focus of supported cameras on the CCTV system directly from the video stream	22	✗
<i>Control PTZ Tours</i>	PTZ Tours can be started and stopped directly from the video stream.	22	✓
<i>Display Video Frame Times</i>	When viewing archived CCTV footage, the time of the current frame will be displayed on the viewer control.	22	✗
<i>Show On-Screen Display</i>	Enable additional information (such as camera name and current playback time) to be displayed as an overlay on video streams.	22	✗
<i>Reverse Playback</i>	When viewing archived CCTV footage, the footage can be played in reverse.	22	✗
<i>Step Forward/Backward</i>	When viewing archived CCTV footage, the footage can be stepped through one frame at a time.	22	✗
<i>Export CCTV Clips</i>	Export video clip of archived CCTV footage to the Evidence Vault or to a file directly from Integriti.	22	✓

INTEGRITI NX WITNESS CCTV PLUGIN

<i>Export CCTV Snapshots</i>	Export still snapshot of archived CCTV footage to the Evidence Vault or to a file directly from Integriti.	22	x
<i>Export Current Frame</i>	Export still snapshot of the current frame in the CCTV Viewer to the Evidence Vault or to a file directly from the CCTV Viewer.	22	x
<i>Stream Audio With Video</i>	Receive audio from the microphone on a supported CCTV camera through an Integriti client workstation	22	x
<i>Send Audio to CCTV Camera</i>	Send audio from an Integriti client workstation out of the speakers on a supported CCTV camera.	22	x

Integrati Nx Witness CCTV Integration Compatibility

Important Notes

Integrati NxWitness Integration requires the digest authentication feature to be enabled in the Nx Meta server for all the users connecting to Nx Meta Server v5 and above.

Required Integrati Version License

The Integrati Nx Witness CCTV Integration requires an Integrati Pro/Infiniti v23 license or higher to be present on the product key running the integration.

Minimum Installed Integrati Version

The Integrati Nx Witness CCTV integration is only compatible with an installation of Integrati Pro or Infiniti that is v22 or higher.

Licensing Requirements

Integrati CCTV Integrations require Integrati Business or Integrati Corporate Software Edition.

For Integrati Business, one CCTV License is required per camera to be used in the system. Integrati Business supports 32 Cameras initially, and additional cameras can be added in lots of 8 using the 996921 CCTV - Extra 8 Cameras license. Any unlicensed Cameras will still show up in Integrati; however, they will not be useable.

For Integrati Corporate, unlimited cameras are supported with no additional licenses required.

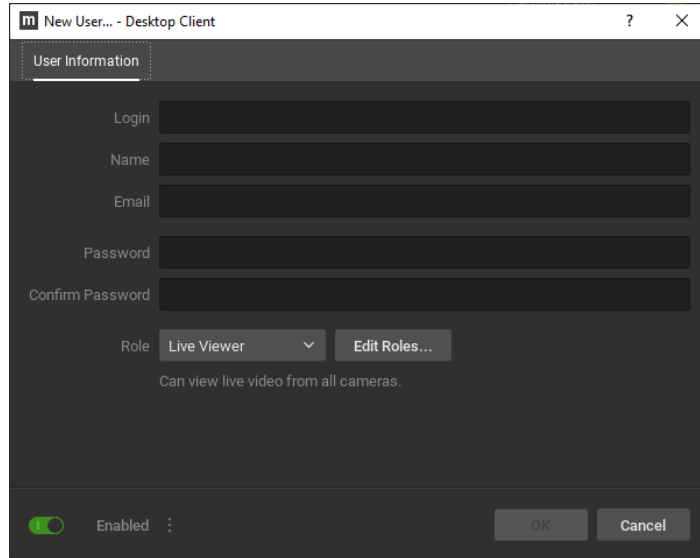
Tested Against

The Integrati Nx Witness CCTV plugin was built and tested against the following versions of software:

- Nx Meta Client v5.0.0.35269 R11
- Nx Meta Server v5.0.0.35269
- Nx Meta Client v4.0.0.29991 R17 x64
- Nx Meta Server v4.0.0.29991

Nx Meta Server Configuration

Integrati NxWitness Integration requires the digest authentication feature to be enabled in the Nx Meta server for the user when connecting to Nx Meta Server v5 and above. This section outlines how to configure it.



1. Open the 'System Administration' window from the 'Main Menu' and click on the 'Users' tab
2. Either add a new user or edit an existing one
3. Click on the three vertical dots towards the bottom left of the User dialog and click the 'Allow digest authentication for this user', then click ok

Integrati Configuration

Ports Used

The following ports are used for communication between the Integrati Nx Witness integration and the Nx Witness server/cameras. These ports should be configured in the Integrati Integration Server and any Integrati Client Machine's firewalls to allow the integration to be used.

- TCP port 7001

Connection Configuration	
Connection Configuration	admin@127.0.0.1
Connection	
Address	127.0.0.1
Login Name	admin
Password	*****
Port	7001
Use HTTPS	<input checked="" type="checkbox"/>
Certificate Validation Mode	Specified Thumbprint
Certificate Thumbprint	
Logging	
Log Verbosity	Debug
Monitoring	
Processing Interval (s)	5
Export	
File Format	.ts
PTZ Control	
Pan Speed	0.5
Tilt Speed	0.5
Zoom Speed	0.5

Connection

Address – The IP Address of the Server to connect to.

Login Name – The Username of the Nx Witness User to connect to the Server with. This User should have sufficient permissions configured in Nx Witness to allow all of the features of the plugin to be used.

Password - The Password of the Nx Witness User to connect to the Server with.

Port - The Port used to connect to the Server. This is 7001 by default. This port should be configured in the Integrati Integration Server and any Integrati Client Machine's firewalls to allow it to be used.

Use HTTPS: Set to true to use HTTPS rather than HTTP for connections.

Certificate Validation Mode: Select the validation mode to use when connecting with an invalid certificate.

Certificate Thumbprint: Enter the thumbprint of the certificate used by the HTTPS connection.

Logging

Log Verbosity - Only logs of the specified level or higher will be logged. If Warning is selected, only Warning, Error and Fatal logs will be written to the log.

Monitoring

Event Processing Interval - How often to process events from the VMS. Specify a time interval between 1 to 60 seconds.

Export

File Format - Select the required format of the video archive file to be exported from the server.

PTZ Control

Pan Speed - Select the speed of Pan PTZ Operations. Specify a speed value between 0 & 1.

Tilt Speed - Select the speed of Tilt PTZ Operations. Specify a speed value between 0 & 1.

Zoom Speed - Select the speed of Zoom PTZ Operations. Specify a speed value between 0 & 1.

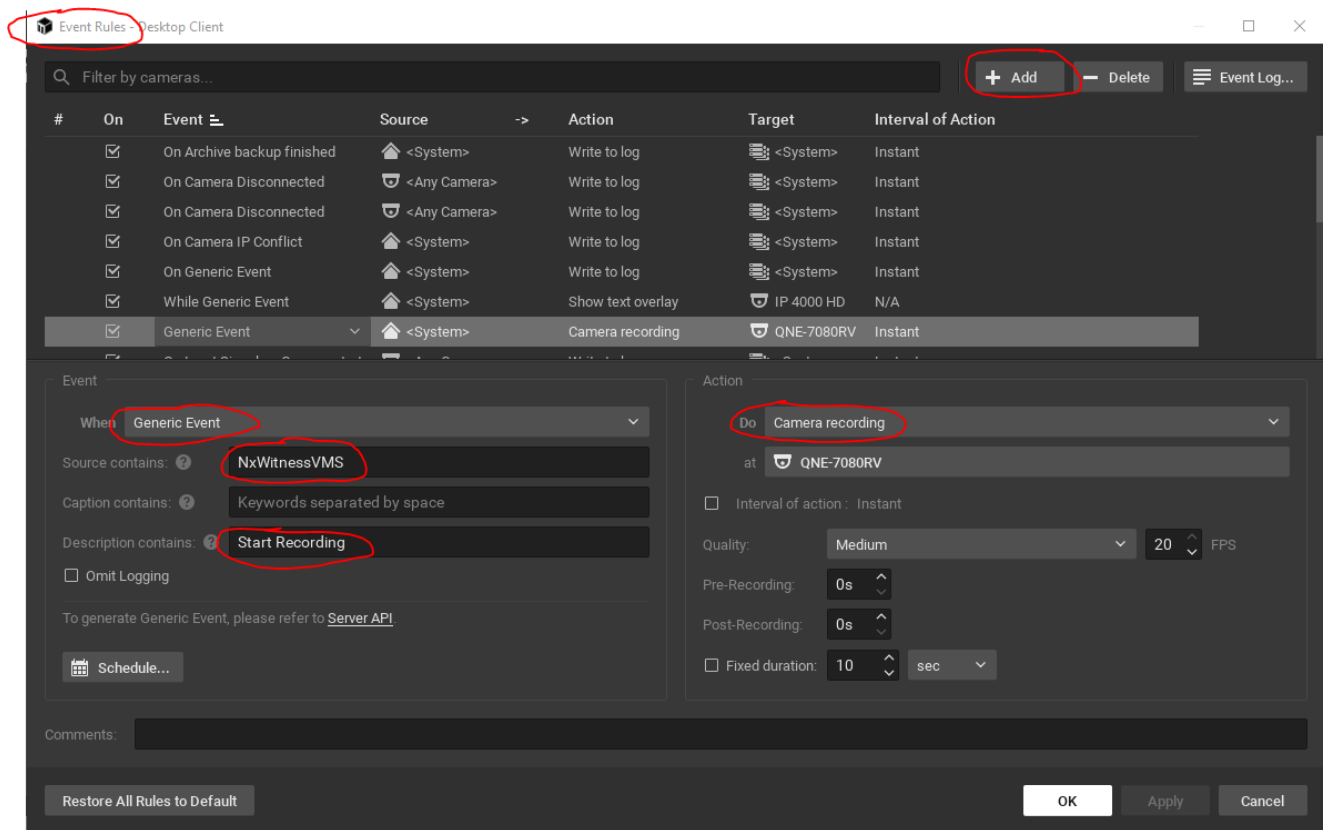
Commands

CCTV Recorder Commands

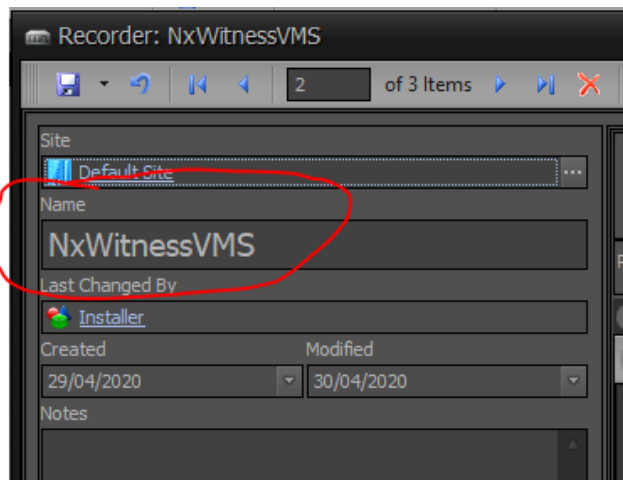
The following commands can be performed on a CCTV Recorder:

Trigger a Generic Event

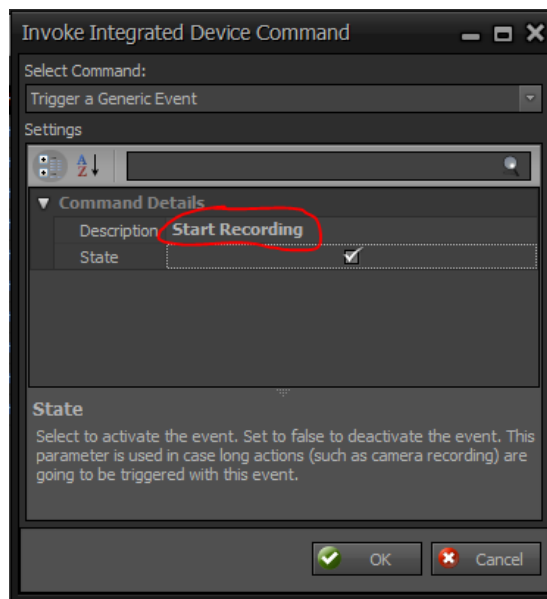
Generic Events can be configured in the VMS to perform an action from a variety of different action types available in response to being triggered by Integrity. The Generic Event must be preconfigured in the VMS first before it can be triggered by Integrity. The below steps outline the configuration process to trigger a “Camera Recording” action as an example. The same steps apply to triggering other action types in the VMS.



1. Open the 'Event Rules' editor in Nx Meta Client and click 'Add'.
2. Under the 'Event' options select 'Generic Event' from the drop down menu next to 'When'.
3. The 'Source contains' field must contain the recorder name given in Integrity in the 'Configuration' steps above.



4. Specify a brief description for the event in the 'Description contains' field
5. Under the 'Action' options select 'Camera recording' from the drop down menu next to 'Do'.
6. Select a camera to start recording on and other relevant options then click 'Ok' to save the event rule and exit.



7. When triggering the event the 'Description' field in Integrity's 'Invoke Integrated Device Command' editor must be contained in 'Description contains' field specified in Event Rules editor above, in this case 'Start Recording'. Set the 'State' option to start recording or leave unchecked to stop recording. Click 'Ok' to trigger the event and exit.

CCTV Camera Commands

The following commands can be performed on a CCTV Camera:

Send Camera To PTZ Preset	Sends the selected camera to a preset identified by Ptz Id. Ptz Id can either be the preset id or name.
Run PTZ Tour On Camera	Runs a tour identified by Ptz Id on the selected camera. Ptz Id can either be the tour id or name.

Troubleshooting

<p>Integrity doesn't play archived video</p>	<ul style="list-style-type: none"> • Are the user credentials correct? • Did Integrity establish a connection with the VMS? • Does the archived footage exist in the VMS?
<p>Integrity cannot export archived video</p>	<ul style="list-style-type: none"> • Is it possible to play the archived video in the VMS for the selected time? • Does the user have permission to view or export archive?
<p>PTZ operations do not work</p>	<ul style="list-style-type: none"> • Are the user credentials correct? • Did Integrity establish a connection with the VMS? • Does the user have permission for PTZ operations?
<p>Integrity is not receiving events</p>	<ul style="list-style-type: none"> • Are the user credentials correct? • Did Integrity establish a connection with the VMS? • Does the user have permission to view event log? • Is persisted connection enabled? • Are the relevant review transitions enabled in recorder editor?
