



INTEGRITI FLIR CAMELEON CCTV INTEGRATION MANUAL



INNER RANGE recommends that all Inner Range systems be installed & maintained by FACTORY CERTIFIED TECHNICIANS.

For a list of Accredited Dealers in your area refer to the Inner Range Website.

<http://www.innerrange.com>

Integrati Flir Cameleon CCTV Integration

Table of Contents

SETUP	3
CCTV CAPABILITIES.....	5
CORE CCTV CAPABILITIES	5
ADVANCED CCTV CAPABILITIES.....	7
INTEGRITI FLIR CAMELEON CCTV INTEGRATION COMPATIBILITY	9
LICENSING REQUIREMENTS	9
MINIMUM INSTALLED INTEGRITI VERSION.....	9
TESTED AGAINST.....	9
CONFIGURATION	10
PORTS USED	10
CONNECTION CONFIGURATION.....	10
<i>Connection</i>	10
<i>Logging</i>	10
SHOWING RADAR TARGETS ON SCHEMATIC MAPS.....	11

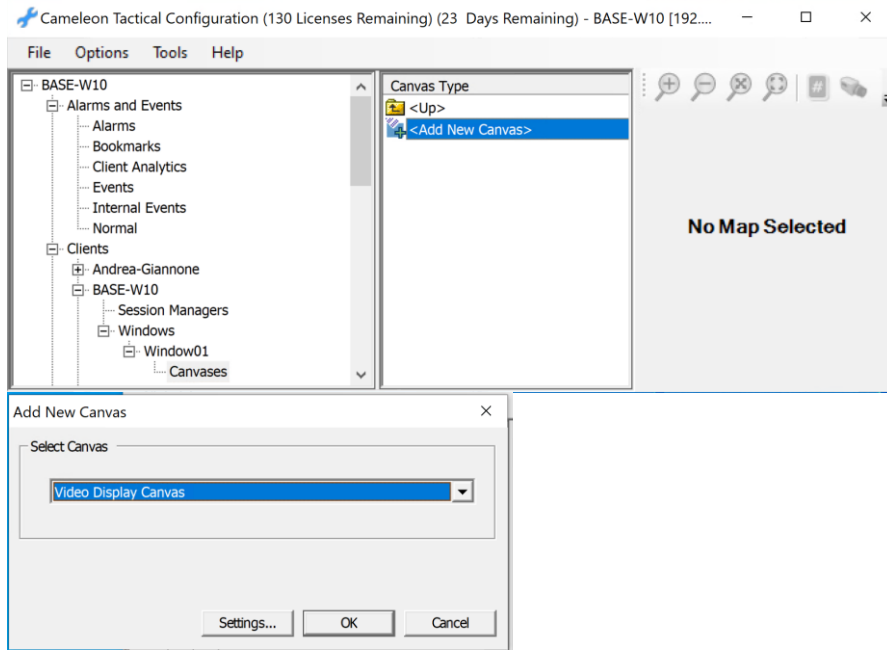
Setup

Before the integration can connect to a Cameleon system, it is necessary to add both the Integration server and Integriti clients' host machines as clients in the Cameleon server configuration.

1. Log in to the system using the Cameleon Configuration Tool.
2. Select the 'Clients' category in the tree view and select 'Add New Client' in the central list. The name of the client should match the computer name you are allowing to connect.

3. Expand the newly-added client, select 'Windows', then select 'Add New Window' in the central list.
4. In order to view video from more than one camera at the same time, 'Replicate settings for n windows' may be selected.

- Expand the newly-added window, right-click 'Canvases', and select 'Add New Canvas' in the central list. Select the Video Display Canvas and then select OK.



- Select 'File' > 'Save'.

CCTV Capabilities

Core CCTV Capabilities

Feature	Feature Description	Ver	Y/N
<i>Stream Live CCTV Footage</i>	Live CCTV footage can be streamed from online cameras in the CCTV system to an Integriti client.	22	✓
<i>Select Custom Aspect Ratio</i>	Select the aspect ratio to use when streaming CCTV footage on a per-camera or per-recorder basis.	22	✓
<i>Stream Archived CCTV Footage</i>	Archived CCTV footage can be streamed from online cameras in the CCTV system to an Integriti client.	22	✓
<i>Control Archived CCTV Playback Speed</i>	Playback speed of archived CCTV footage can be controlled from the Integriti client.	22	✓
<i>Auto-Play CCTV Footage from Events</i>	Live or archived CCTV footage can be configured to be automatically displayed when an event occurs in the Integriti System on a specific client workstation.	22	✓
<i>Create Child Devices from Camera Configuration</i>	Child CCTV Cameras will be created based on the Camera configuration on Refreshing Child Devices	22	✓
<i>Associate Cameras With Entities</i>	Cameras loaded from the CCTV system can be associated with Integriti Entities to allow direct control of one from the other.	22	✓
<i>Show Associated CCTV From Event</i>	Associated CCTV Footage can be directly accessed and viewed from any event occurring in Integriti that has an associated Camera (either a direct association or through the Entity that triggered the event)	22	✓
<i>Control PTZ Cameras</i>	Send PTZ commands to support cameras on the CCTV system to control the Pan, Tilt and Zoom of the camera directly from the video stream.	22	✗
<i>Send Cameras to PTZ Preset</i>	Send supported PTZ cameras on the CCTV system to preconfigured PTZ presets directly from the video stream.	22	✗
<i>Digital PTZ Control</i>	Digitally zoom the CCTV stream's image for non-PTZ cameras and archived footage.	22	✓
<i>CCTV Layouts</i>	Store a collection of Cameras with an specific viewer layout to be brought up at a later point in time	22	✓

INTEGRITI FLIR CAMELEON CCTV PLUGIN

Feature	Feature Description	Ver	Y/N
<i>CCTV Surrounding Cameras View</i>	Show a selected camera, as well as the cameras configured to be N, NE, E, SE, S, SW, W and NW of the selected camera, quickly jumping between surrounding streams directly from the view.	22	✓
<i>Trigger Actions in the CCTV System</i>	Trigger actions or commands in the CCTV system directly from Integriti.	22	✗
<i>View and Control Cameras on Schematics</i>	Cameras can be added to Schematics Maps in Integriti and directly viewed and controlled directly from the Schematic. Each camera's state is immediately visible on the Schematic where available.	22	✓
<i>Sync Time (via NTP)</i>	Sync the time of the CCTV system and Integriti to match via an NTP.	22	✗
<i>Display Connection Status to CCTV System</i>	Display whether or not Integriti is currently connected to the CCTV system.	22	✓
<i>Receive Events/Alarms from the CCTV System</i>	Log events/alarms occurring on the CCTV system to Integriti's Review.	22	✓
<i>Trigger Integriti Actions on CCTV Events/Alarms</i>	Trigger actions to automatically occur in Integriti whenever specific events/alarms are received from the CCTV system.	22	✓
<i>Generate Alerts from CCTV Events/Alarms</i>	Automatically generate and restore Alerts tied to a specific Camera in Integriti whenever specific events/alarms are received from the CCTV system.	22	✓

Advanced CCTV Capabilities

Feature	Feature Description	Ver	Y/N
<i>Automatically Load Camera Configuration</i>	Refreshing Child Devices will automatically populate all cameras configured in the CCTV System into Integriti when run. If not supported, camera configuration will need to be manually entered into Integriti.	22	✓
<i>64-bit Integration Server Support</i>	The integration supports being run on the 64-bit integration server.	22	✗
<i>Show Camera Status</i>	The current online/offline status of configured cameras will be visible directly through Integriti.	22	✗
<i>Categorised Review Records</i>	Review generated by the integration will have a different category for different event types, allowing for easy filtering of specific CCTV events	22	✗
<i>License Plate Recognition</i>	License plates recognised by supported cameras in the CCTV system can be used to automatically allow access to configured Doors.	22	✗
<i>Trigger Inputs on CCTV Event</i>	Inputs in Integriti can be automatically triggered and restored when specified types of events are received from the CCTV system.	22	✓
<i>Control Iris and Focus</i>	Control the iris and focus of supported cameras on the CCTV system directly from the video stream	22	✗
<i>Control PTZ Tours</i>	PTZ Tours can be started and stopped directly from the video stream.	22	✗
<i>Display Video Frame Times</i>	When viewing archived CCTV footage, the time of the current frame will be displayed on the viewer control.	22	✓
<i>Show On-Screen Display</i>	Enable additional information (such as camera name and current playback time) to be displayed as an overlay on video streams.	22	✗
<i>Reverse Playback</i>	When viewing archived CCTV footage, the footage can be played in reverse.	22	✓
<i>Step Forward/Backward</i>	When viewing archived CCTV footage, the footage can be stepped through one frame at a time.	22	✓
<i>Export CCTV Clips</i>	Export video clip of archived CCTV footage to the Evidence Vault or to a file directly from Integriti.	22	✓

INTEGRITI FLIR CAMELEON CCTV PLUGIN

Feature	Feature Description	Ver	Y/N
<i>Export CCTV Snapshots</i>	Export still snapshot of archived CCTV footage to the Evidence Vault or to a file directly from Integriti.	22	✓
<i>Export Current Frame</i>	Export still snapshot of the current frame in the CCTV Viewer to the Evidence Vault or to a file directly from the CCTV Viewer.	22	✓
<i>Stream Audio With Video</i>	Receive audio from the microphone on a supported CCTV camera through an Integriti client workstation	22	✗
<i>Send Audio to CCTV Camera</i>	Send audio from an Integriti client workstation out of the speakers on a supported CCTV camera.	22	✗

Integriti Flir Cameleon CCTV Integration Compatibility

Licensing Requirements

Integriti CCTV Integrations require Integriti Business or Integriti Corporate Software Edition.

For Integriti Business, one CCTV License is required per camera to be used in the system. Integriti Business supports 32 Cameras initially, and additional cameras can be added in lots of 8 using the 996921 CCTV - Extra 8 Cameras license. Any unlicensed Cameras will still show up in Integriti; however, they will not be useable.

For Integriti Corporate, unlimited cameras are supported with no additional licenses required.

Minimum Installed Integriti Version

The Integriti Flir Cameleon CCTV integration is only compatible with an installation of Integriti Pro or Infiniti that is v22.0.1 or higher.

Tested Against

The Integriti Flir Cameleon CCTV plugin was built and tested against the following versions of software:

- Cameleon Tactical v2022.1.19

Configuration

This section specifies the Flir Cameleon CCTV Integration specific configuration details. Please refer to the 'Integrati Integrations – CCTV' manual for a detailed description on how to fully configure and use CCTV integrations in Integrati/Infiniti.

Ports Used

The following ports are used for communication between the Integrati Flir Cameleon CCTV Integration and the Flir Cameleon server/cameras. These ports should be configured in the Integrati Integration Server and any Integrati Client Machine's firewalls to allow the integration to be used.

- Port specified in Connection Configuration

Connection Configuration

▼ Configuration	
▼ Integration Configuration	user@1.2.3.4
▼ Connection	
Address	1.2.3.4
Login Name	user
Password	*****
Port	32000
▼ Logging	
Log Verbosity	Debug ▼

Connection

Address – The IP Address of the Server to connect to.

Login Name – The Username of the Flir Cameleon User to connect to the Server with. This User should have sufficient permissions configured in Flir Cameleon to allow all of the features of the plugin to be used.

Password - The Password of the Flir Cameleon User to connect to the Server with.

Port – The port number of the Server to connect to.

Logging

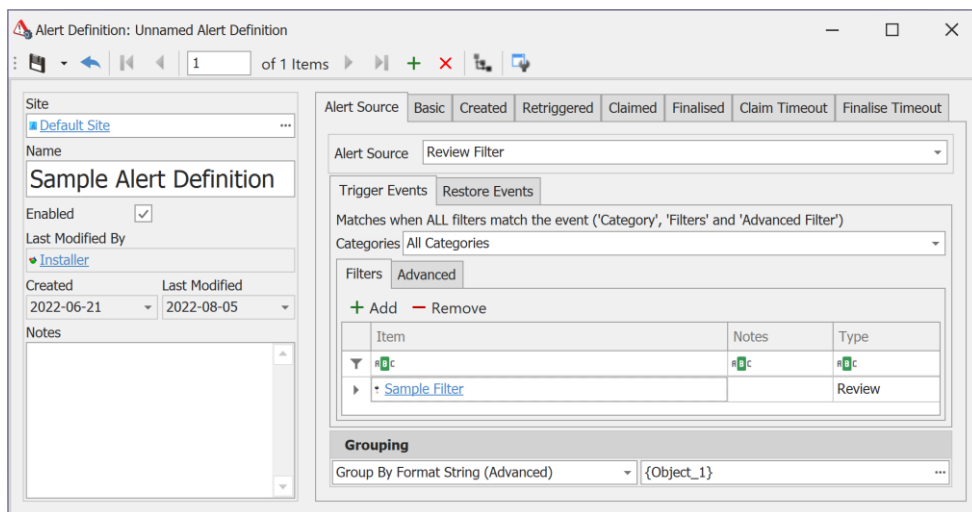
Log Verbosity - Only logs of the specified level or higher will be logged. If Warning is selected, only Warning, Error and Fatal logs will be written to the log. To include detailed connection status information in the logs, this must be set to Trace or Debug.

Showing Radar Targets on Schematic Maps

The Flir Cameleon integration provides location information with alerts and radar events. Tracking updates for objects are provided as separate review events. These events use the Radar Target Detected, Radar Target Updated and Radar Target Lost review transitions (available in Integriti 22.1.1 or above), and an identifier of the object being tracked is provided in the **Object_1** field.

Alerts based on these review events can be grouped so that updates for the same object are displayed as a single alert:

1. Edit the alert definition in Integriti.
2. In the 'Alert Source' tab, under the 'Grouping' section, select 'Group by Format String (Advanced)'.
3. Enter the format string `{Object_1}`.



In Integriti version 22.1.1 or above, review events and alerts with associated location data can be displayed on schematic maps by right clicking on the review event or alert and selecting 'Show on Map'. This requires a schematic map with an alert element presenter defined in the Map Properties pane to be placed on a schematic map group such that it covers the location of the alert. When viewing a grouped alert on a schematic map, its representation on the map will automatically update as the alert itself is updated.